



COVID-19: In the Trenches

This meeting will be recorded and will be available at www.fmda.org/journalclub.php



FMDA Journal Club

June 24, 2020

Diane Sanders-Cepeda, DO, CMD – Host

Dr. Thomas Edwards, Dr. Elizabeth Hames, Dr. Brian Kiedrowski, and Dr. Dan Kaplan – Special Guest Panelists



Agenda

- COVID-19 State of the State
 - In the Trenches Panel Talk
 - Open Discussion
-

World Map

U.S. Map

Critical Trends

COVID-19 Dashboard by the Center for Systems Science and Engineering (CSSE) at Johns Hopkins University (JHU)

Total Confirmed
2,348,956

Confirmed Cases by Country/Region/Sovereignty

2,348,956 US
1,145,906 Brazil
106,043 Russia
56,183 India
407,682 United Kingdom
60,810 Peru
50,767 Chile
46,752 Spain
38,833 Italy
12,501 Iran
97,804 France
92,871 Germany
91,410 Mexico

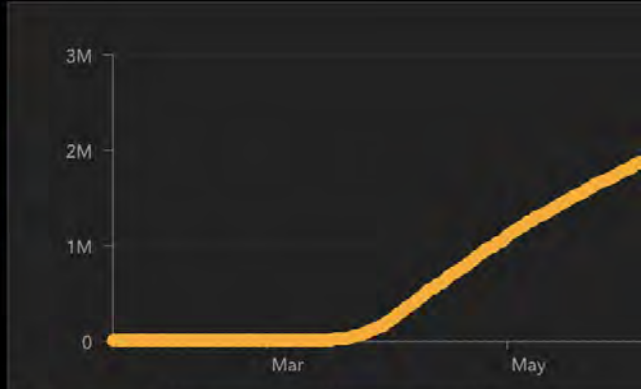


Cumulative Confirmed Cases | Active Cases | Incidence Rate | Case-Fatality Ratio | Testing Rate | Hospitalization Rate

Global Deaths
121,232
121,279 deaths US

US State Level Deaths, Recovered

31,232 deaths, 69,711 recovered New York US
13,025 deaths, 29,511 recovered New Jersey US
7,889 deaths, recovered Massachusetts US
6,707 deaths, recovered Illinois US
6,464 deaths, 64,502 recovered Pennsylvania US



Confirmed | Logarithmic | Daily Cases

Last Updated at (M/D/YYYY)
6/24/2020, 9:33:36 AM

188
countries/regions

Lancet Inf Dis Article: [Here](#). Mobile Version: [Here](#).
Lead by JHU CSSE. Technical Support: [Esri Living Atlas team](#) and [JHU APL](#). Financial Support: [JHU](#) and [NSF](#). Click [here](#) to donate to the CSSE dashboard team, and other JHU COVID-19 Research Efforts. [FAQ](#). Read more in this [blog](#). [Contact US](#).

United States of America

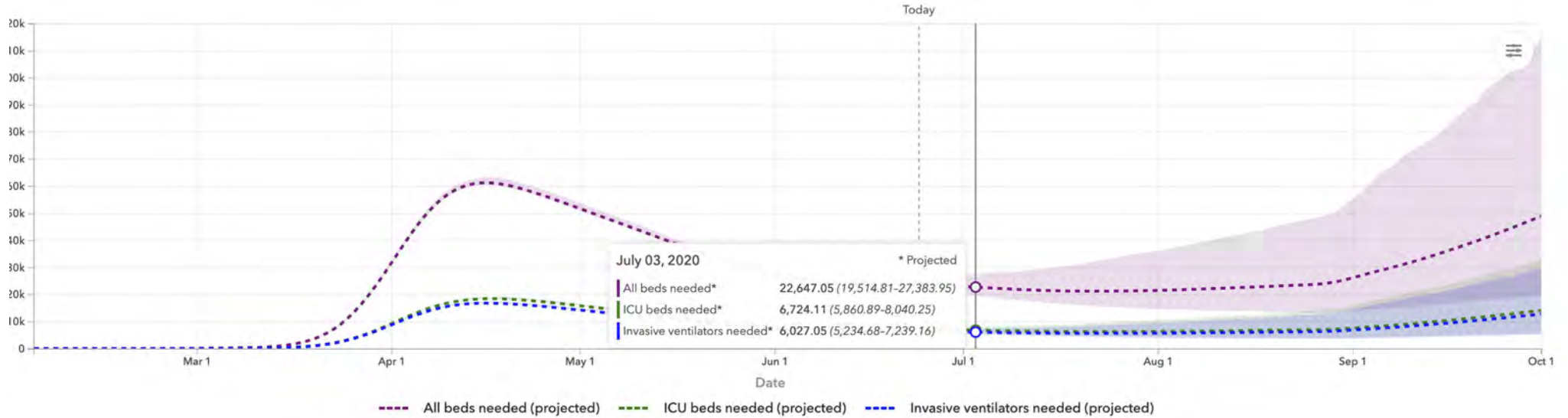
To see results within this country, select a subnational location

Total deaths Daily deaths Infections and testing Hospital resource use Social distancing

Compare Map

Hospital resource use

All resources All beds ICU beds Invasive ventilators



All resources specific to COVID-19 patients.
Shaded areas indicate 95% uncertainty interval.

To see results within this country, select a subnational location

Total deaths

Daily deaths

Infections and testing

Hospital resource use

Social distancing

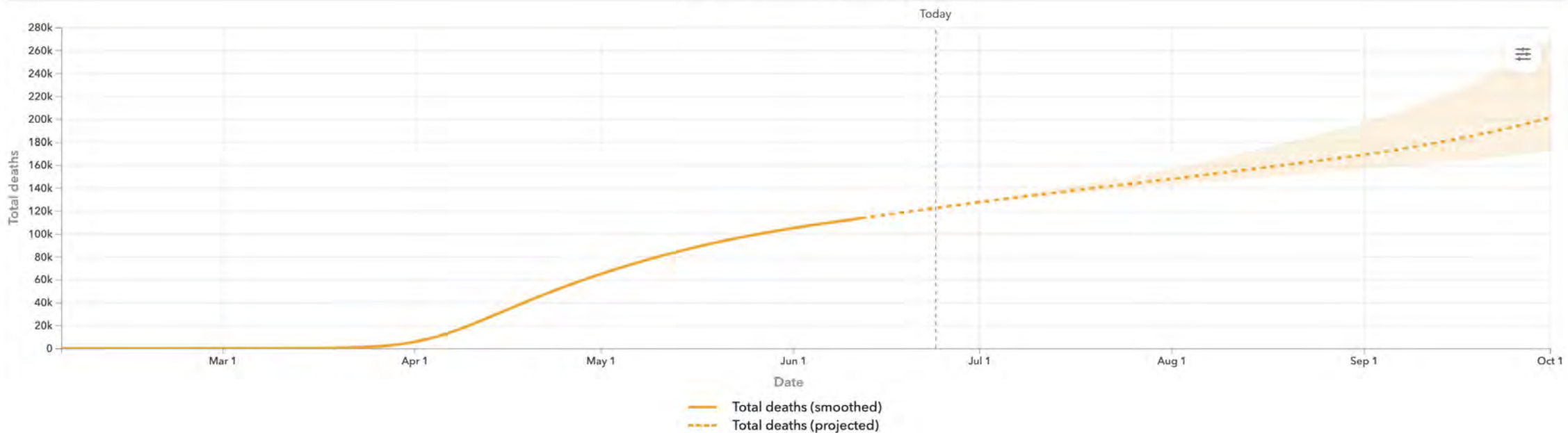
Trend

Compare

Map

Total deaths

201,129 COVID-19 deaths
projected by October 1, 2020



All deaths specific to COVID-19 patients.
Shaded area indicates 95% uncertainty interval.

Current Situation in Florida

Updated as of Tues 6/23/2020 3:33:03 PM EST

Positive Residents

101,303

Positive Non-Residents

2,200

Total Cases

103,503

Deaths

3,238

Positive Residents Out of State

8

World Map

U.S. Map

Critical Trends

COVID-19 United States Cases by County Johns Hopkins University

States/Territories Florida County (or Equivalent) Miami-Dade

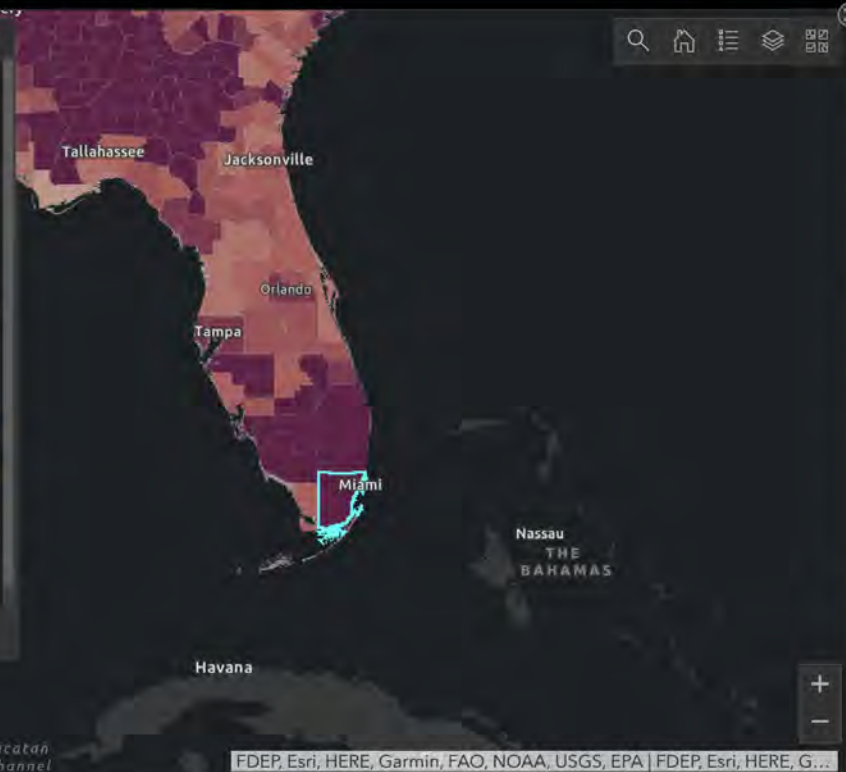
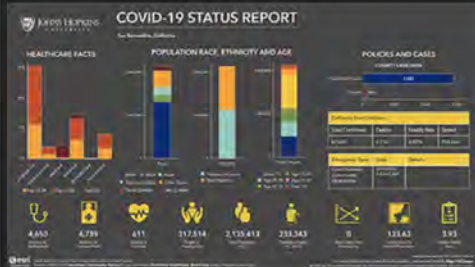
Top 50 Confirmed Cases by County

- 88,512 confirmed Los Angeles
- 87,784 confirmed Cook
- 64,099 confirmed Queens
- 58,233 confirmed Kings
- 47,194 confirmed Bronx
- 41,544 confirmed Nassau
- 41,056 confirmed Suffolk
- 34,581 confirmed Westchester
- 33,883 confirmed Maricopa
- 26,822 confirmed Miami-Dade
- 26,417 confirmed New York
- 25,335 confirmed Philadelphia

Miami-Dade, Florida

Confirmed by 971.26
100k Population
Confirmed Cases 26,822
Deaths 902

Infographic Details



Confirmed by Population Confirmed Deaths Fatality Rate

Top 20 Counties by Number of Deaths

- 5,344 deaths Kings
- 5,304 deaths Queens
- 4,439 deaths Cook
- 3,724 deaths Bronx
- 3,171 deaths Los Angeles
- 2,690 deaths Wayne
- 2,416 deaths New York
- 2,179 deaths Nassau
- 1,970 deaths



In the Trenches Panel

- Dr. Thomas Edwards
- Dr. Elizabeth Hames
- Dr. Dan Kaplan
- Dr. Brian Kiedrowski



Testing

Practice Challenges & Opportunities





RON DESANTIS
GOVERNOR

MARY C. MAYHEW
SECRETARY

[Home](#) | [About Us](#) | [Medicaid](#) | [Licensure & Regulation](#) | [Report Fraud](#)

June 16, 2020

Emergency Rule: COVID-19 Testing for Nursing Home and Assisted Living Facility Staff Required Every Two Weeks

To further prevent the spread of COVID-19 at Florida nursing homes and assisted living facilities, the Agency for Health Care Administration issued Emergency Rule 59AER20-4 and Emergency Rule 59AER20-5. **These rules require nursing home and assisted living facility staff to be tested for COVID-19 every two weeks with testing resources provided by the state and submit the test results to their employer/facility. The facility must keep copies of all staff testing documentation on site.**

Telehealth

Practice Challenges & Opportunities

EDITORS' PICK | 2,930 views | Jun 8, 2020, 03:59pm EDT

The Coronavirus Pandemic Has Boosted Telehealth; Here's How Existing Spaces Can Support Virtual Visits



Teri Oelrich Contributor

Coronavirus Frontlines Contributor Group ⓘ

[Healthcare](#)

I am a Partner, Clinician and Healthcare Design Strategist with NBBJ.

Bryan Langlands Contributor

Coronavirus Frontlines Contributor Group ⓘ

[Healthcare](#)

I am a Principal and Senior Medical Planner with NBBJ.

PPE Shortages & Conservation

Practice Challenges & Opportunities

Insights & Strategies to Meet Healthcare Demands



How Will COVID-19 Affect the Health Care Economy?

David Cutler, PhD¹

Changes to the Practice Workflow

Pandemic Financial Impact

Nursing home administrator shares battle with COVID-19, financial impact

By Brian Hill | Published June 12 | News | FOX 5 Atlanta

SPONSORED CONTENT BY ACTION FOR HEALTH 

June 22, 2020 05:00 AM

Independent medical practices need real relief

Christopher Sheeron

president, Action for Health

Physical & Mental Health of the Provider

Open Discussion





THE FLORIDA SOCIETY
FOR POST-ACUTE AND
LONG-TERM
CARE MEDICINE

**400 Executive Center Drive, Suite 208
West Palm Beach, FL 33401**

www.fmda.org; www.bestcarepractices.org



FMDA's Journal Club will be off next week and will return July 8, 2020

This meeting has been recorded and will be available at www.fmda.org/journalclub.php